

SHEET KEY PLAN :

NOTES :

- THIS DRAWING SHOULD BE READ IN CONJUNCTION WITH DRAWING Nos. 70012806-03-TMO-01-01 TO 70012806-03-TMO-01-05 & 70012806-03-TMO-02-02 TO 70012806-03-TMO-02-06
- REFER TO TABLE ON DRAWING No. 70012806-03-TMO-02-06 FOR TOTAL PROVISION OF WAITING / LOADING FEATURES

KEY

WAITING / LOADING FEATURE TYPE AND RESTRICTION

P1	PAY TO PARK BAY TYPE 1 : MON - SAT, 8.30am - 6.30pm, MAX STAY 4 HOURS, NO RETURN WITHIN 1 HOUR
P2	PAY TO PARK BAY TYPE 2 : MON - SAT 8.30am - 6.30pm, MAX STAY 20 MINS, NO RETURN WITHIN 1 HOUR 6.30pm - 8.30am NO STOPPING EXCEPT TAXIS
P3	PAY TO PARK BAY TYPE 3 : MON - SAT, MIDDAY - 6.30pm, MAX STAY 4 HOURS, NO RETURN WITHIN 1 HR NO WAITING: MON-SAT, MIDNIGHT - MIDDAY DISABLED PARKING BAY AT ANY TIME, MAX STAY 4 HOURS ON MON - FRI, 8.30am - 6.30pm, NO RETURN WITHIN 1 HOUR
D	RESIDENTS PARKING BAY (WESTMINSTER E) AT ANY TIME NO RETURN WITHIN 1 HOUR
R	TAXI BAY AT ANY TIME NO STOPPING EXCEPT TAXIS
T	TAXI BAY AT ANY TIME NO STOPPING EXCEPT TAXIS
DR	DOCTORS PARKING BAY 8.00am - 8.00pm
L1	LOADING BAY TYPE 1 AT ANY TIME, MAX STAY 20 MINS, NO RETURN WITHIN 1 HOUR
L2	LOADING BAY TYPE 2 GOODS VEHICLES LOADING ONLY MON - SAT, 7.00am - 10.00pm MAX STAY 1 HOUR, NO RETURN WITHIN 1 HOUR
	SINGLE YELLOW LINE NO WAITING: MON - SAT, 8.30am - 6.30pm
	SINGLE YELLOW LINE + SINGLE YELLOW KERB MARKINGS NO WAITING: MON - SAT, 8.30am - 6.30pm, NO LOADING: MON - SAT, MIDDAY - 6.30pm
	DOUBLE YELLOW LINE NO WAITING: AT ANY TIME
	DOUBLE YELLOW LINE + SINGLE YELLOW KERB MARKINGS NO WAITING: AT ANY TIME & NO LOADING: MON - FRI, 8.30am - 6.30pm & SAT 8.30am - 1.30pm
	DOUBLE YELLOW LINE + SINGLE YELLOW KERB MARKINGS NO WAITING: AT ANY TIME, NO LOADING: MON - SAT, 7.00am - 7.00pm
	DOUBLE YELLOW LINE + DOUBLE YELLOW KERB MARKINGS NO WAITING: AT ANY TIME & NO LOADING: AT ANY TIME
	EXISTING TYPE 1 / TYPE 2 CYCLE STAND
	PROPOSED TYPE 1 CYCLE STAND
	PROPOSED TYPE 2 CYCLE STAND

B	14.12.2016	PAD	REVISED FOLLOWING COMMENTS ARISING FROM TMO TEAM & RSA		
A	16.09.2016	PAD	INITIAL ISSUE	AK	CDS
REV	DATE	BY	DESCRIPTION	CHK	APD

CONWAY
great people, great work

WSP | PARSONS BRINCKERHOFF

25 Mandela Way, London, SE1 5SZ
www.fconway.co.uk www.wspgroup.com

City of Westminster

PROJECT

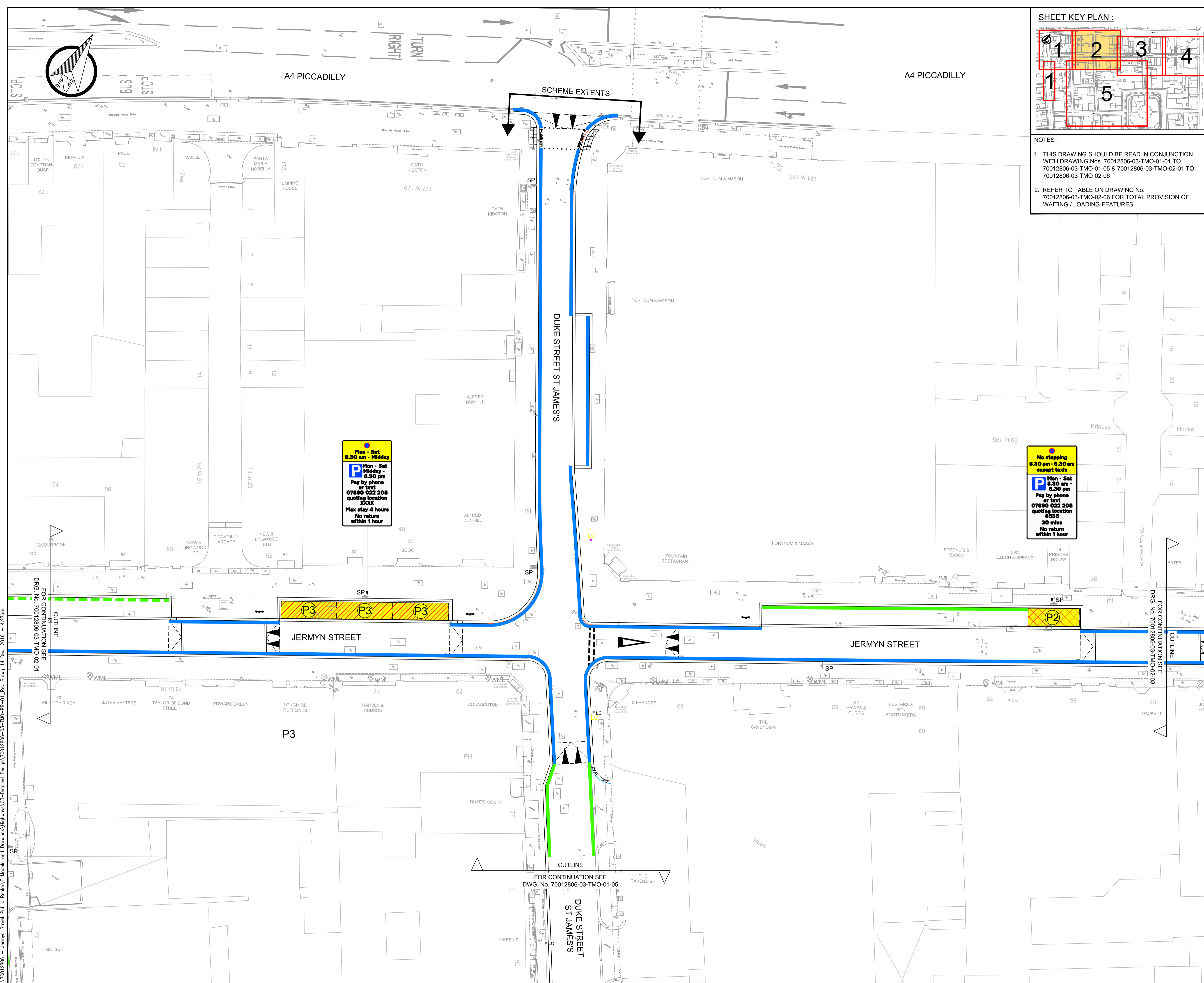
JERMYN STREET
PUBLIC REALM IMPROVEMENTS

TITLE

TMO CONSULTATION
PROPOSED PARKING / LOADING RESTRICTIONS
SHEET 1 OF 6

SCALE @ A1	DATE	DESIGN/DRAWN	CHECKED	APPROVED	SHT
1:200	13-07-2016	PO/PAD	AK	CDS	A1
JOB No:	WWESA1481	BREF/DSS No:	23005		
DRAWING No:	70012806-03-TMO-PR-01	REV:			B

This map is reproduced from Ordnance Survey material with the permission of Ordnance Survey on behalf of the Controller of Her Majesty's Stationery Office. © Crown copyright. Unauthorised reproduction infringes Crown copyright and may lead to prosecution or civil proceedings. (WCC/LA 10009597)



SHEET KEY PLAN :

NOTES :

- THIS DRAWING SHOULD BE READ IN CONJUNCTION WITH DRAWING Nos. 70012806-03-TMO-01-01 TO 70012806-03-TMO-01-05 & 70012806-03-TMO-02-01 TO 70012806-03-TMO-02-06
- REFER TO TABLE ON DRAWING No. 70012806-03-TMO-02-06 FOR TOTAL PROVISION OF WAITING / LOADING FEATURES

KEY

WAITING / LOADING FEATURE TYPE AND RESTRICTION

- P1** PAY TO PARK BAY TYPE 1 : MON - SAT, 8.30am - 6.30pm, MAX STAY 4 HOURS, NO RETURN WITHIN 1 HOUR
- P2** PAY TO PARK BAY TYPE 2 : MON - SAT 8.30am - 6.30pm, MAX STAY 20 MINS, NO RETURN WITHIN 1 HOUR 6.30pm - 8.30am NO STOPPING EXCEPT TAXIS
- P3** PAY TO PARK BAY TYPE 3 : MON - SAT, MIDDAY - 6.30pm, MAX STAY 4 HOURS, NO RETURN WITHIN 1 HR NO WAITING: MON-SAT, MIDNIGHT - MIDDAY DISABLED PARKING BAY AT ANY TIME, MAX STAY 4 HOURS ON MON - FRI, 8.30am - 6.30pm, NO RETURN WITHIN 1 HOUR
- D** RESIDENTS PARKING BAY (WESTMINSTER E) AT ANY TIME
- T** TAXI BAY AT ANY TIME NO STOPPING EXCEPT TAXIS
- DR** DOCTORS PARKING BAY 8.00am - 8.00pm
- L1** LOADING BAY TYPE 1 AT ANY TIME, MAX STAY 20 MINS, NO RETURN WITHIN 1 HOUR
- L2** LOADING BAY TYPE 2 GOODS VEHICLES LOADING ONLY MON - SAT, 7.00am - 10.00pm MAX STAY 1 HOUR, NO RETURN WITHIN 1 HOUR
- SINGLE YELLOW LINE NO WAITING: MON - SAT, 8.30am - 6.30pm
- SINGLE YELLOW LINE + SINGLE YELLOW KERB MARKINGS NO WAITING : MON - SAT, 8.30am - 6.30pm, NO LOADING : MON - SAT, MIDDAY - 6.30pm
- DOUBLE YELLOW LINE NO WAITING : AT ANY TIME
- DOUBLE YELLOW LINE + SINGLE YELLOW KERB MARKINGS NO WAITING : AT ANY TIME & NO LOADING : MON - FRI, 8.30am - 6.30pm & SAT 8.30am - 1.30pm
- DOUBLE YELLOW LINE + SINGLE YELLOW KERB MARKINGS NO WAITING : AT ANY TIME, NO LOADING : MON - SAT, 7.00am - 7.00pm
- DOUBLE YELLOW LINE + DOUBLE YELLOW KERB MARKINGS NO WAITING : AT ANY TIME & NO LOADING : AT ANY TIME
- EXISTING TYPE 1 / TYPE 2 CYCLE STAND
- PROPOSED TYPE 1 CYCLE STAND
- PROPOSED TYPE 2 CYCLE STAND

Mon - Sat
8.30 am - Midday

Mon - Sat
Midday - 6.30 pm
 Pay by phone
 or text
07860 022 205
 quoting location
XXXX
 Max stay 4 hours
 No return
 within 1 hour

No stopping
6.30 pm - 8.30 am
except taxis

Mon - Sat
6.30 am - 6.30 pm
 Pay by phone
 or text
07860 022 205
 quoting location
6535
 20 mins
 No return
 within 1 hour

REV	DATE	BY	DESCRIPTION	CHK	APP
B	14.12.2016	PAD	REVISED FOLLOWING COMMENTS ARISING FROM TMO TEAM & RSA		
A	16.09.2016	PAD	INITIAL ISSUE	AK	CDS

DRAWING STATUS

DETAILED DESIGN

25 Mandela Way, London, SE1 5SZ
www.fonway.co.uk www.wspgroup.com

CLIENT

City of Westminster

PROJECT

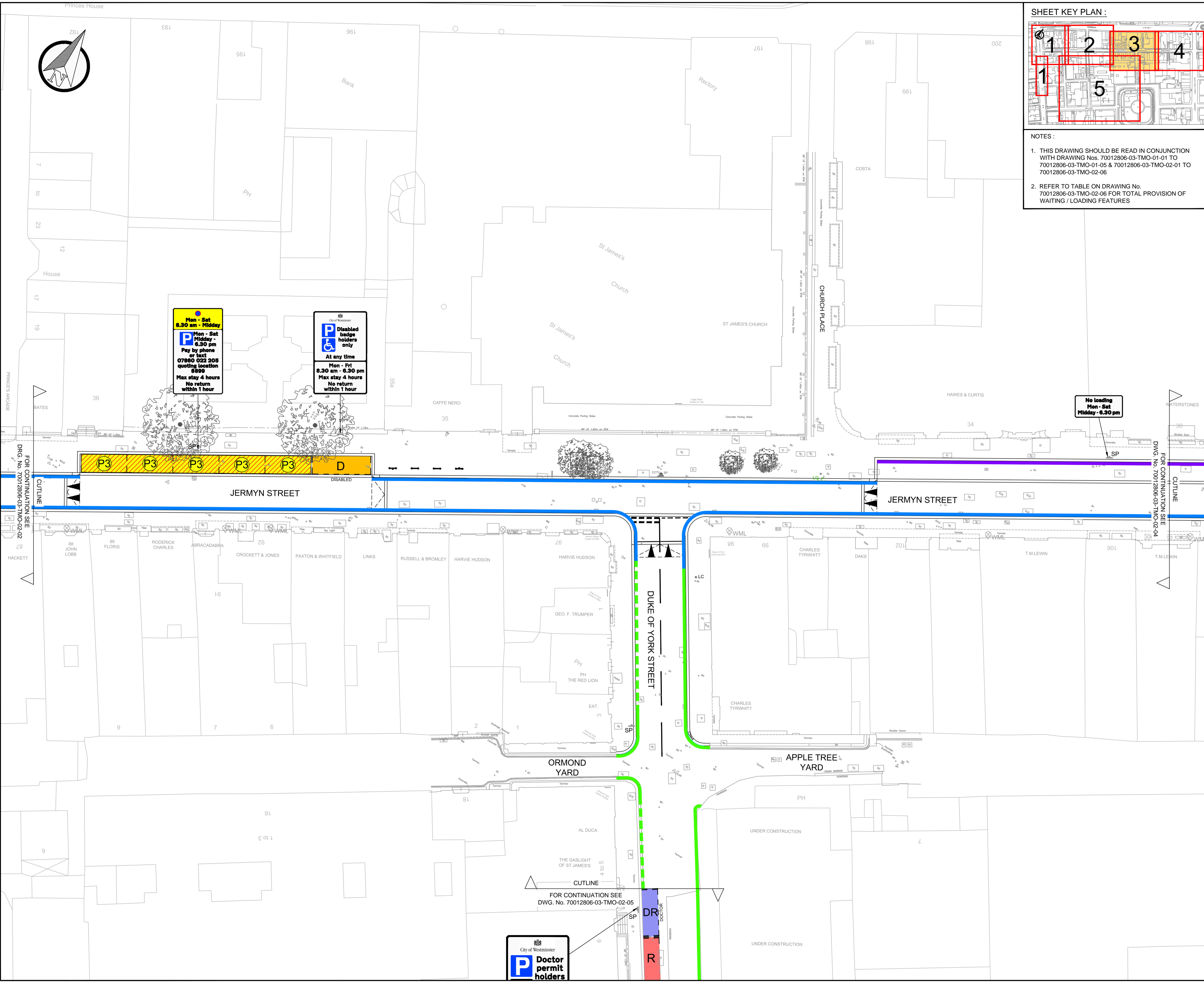
JERMYN STREET
PUBLIC REALM IMPROVEMENTS

TITLE

TMO CONSULTATION
PROPOSED PARKING / LOADING RESTRICTIONS
SHEET 2 OF 6

SCALE @ A1	DATE	DESIGN/DRAWN	CHECKED	APPROVED	SHT
1:200	13-07-2016	PO/PAD	AK	CDS	A1
JOB No.	BRIEF/DSS No.		REV.		
WWESA1481	23005		B		
DRAWING No.					
70012806-03-TMO-PR-02					

T: 70012806 - Jermyn Street Public Realm E Models and Drawings Highways 03 - Detailed Design 70012806-03-TMO-PR-01 Rev 5 Aug 14 Dec 2016 - 4:27pm
 FOR CONTINUATION SEE DWG. No. 70012806-03-TMO-02-01
 FOR CONTINUATION SEE DWG. No. 70012806-03-TMO-02-03
 FOR CONTINUATION SEE DWG. No. 70012806-03-TMO-01-05



SHEET KEY PLAN :

NOTES :

- THIS DRAWING SHOULD BE READ IN CONJUNCTION WITH DRAWING Nos. 70012806-03-TMO-01-01 TO 70012806-03-TMO-01-05 & 70012806-03-TMO-02-01 TO 70012806-03-TMO-02-06
- REFER TO TABLE ON DRAWING No. 70012806-03-TMO-02-06 FOR TOTAL PROVISION OF WAITING / LOADING FEATURES

KEY

WAITING / LOADING FEATURE TYPE AND RESTRICTION

P1	PAY TO PARK BAY TYPE 1 : MON - SAT, 8.30am - 6.30pm, MAX STAY 4 HOURS, NO RETURN WITHIN 1 HOUR
P2	PAY TO PARK BAY TYPE 2 : MON - SAT 8.30am - 6.30pm, MAX STAY 20 MINS, NO RETURN WITHIN 1 HOUR 6.30pm - 8.30am NO STOPPING EXCEPT TAXIS
P3	PAY TO PARK BAY TYPE 3 : MON - SAT, MIDDAY - 6.30pm, MAX STAY 4 HOURS, NO RETURN WITHIN 1 HR NO WAITING: MON-SAT, MIDNIGHT - MIDDAY
D	DISABLED PARKING BAY AT ANY TIME, MAX STAY 4 HOURS ON MON - FRI, 8.30am - 6.30pm, NO RETURN WITHIN 1 HOUR
R	RESIDENTS PARKING BAY (WESTMINSTER E) AT ANY TIME
T	TAXI BAY AT ANY TIME NO STOPPING EXCEPT TAXIS
DR	DOCTORS PARKING BAY 8.00am - 8.00pm
L1	LOADING BAY TYPE 1 AT ANY TIME, MAX STAY 20 MINS, NO RETURN WITHIN 1 HOUR
L2	LOADING BAY TYPE 2 GOODS VEHICLES LOADING ONLY MON - SAT, 7.00am - 10.00pm MAX STAY 1 HOUR, NO RETURN WITHIN 1 HOUR
	SINGLE YELLOW LINE NO WAITING: MON - SAT, 8.30am - 6.30pm
	SINGLE YELLOW LINE + SINGLE YELLOW KERB MARKINGS NO WAITING: MON - SAT, 8.30am - 6.30pm, NO LOADING: MON - SAT, MIDDAY - 6.30pm
	DOUBLE YELLOW LINE NO WAITING: AT ANY TIME
	DOUBLE YELLOW LINE + SINGLE YELLOW KERB MARKINGS NO WAITING: AT ANY TIME & NO LOADING: MON - FRI, 8.30am - 6.30pm & SAT 8.30am - 1.30pm
	DOUBLE YELLOW LINE + SINGLE YELLOW KERB MARKINGS NO WAITING: AT ANY TIME, NO LOADING: MON - SAT, 7.00am - 7.00pm
	DOUBLE YELLOW LINE + DOUBLE YELLOW KERB MARKINGS NO WAITING: AT ANY TIME & NO LOADING: AT ANY TIME
	EXISTING TYPE 1 / TYPE 2 CYCLE STAND
	PROPOSED TYPE 1 CYCLE STAND
	PROPOSED TYPE 2 CYCLE STAND

B	14.12.2016	PAD	REVISED FOLLOWING COMMENTS ARISING FROM TMO TEAM & RSA		
A	16.09.2016	PAD	INITIAL ISSUE	AK	CDS
REV	DATE	BY	DESCRIPTION	CHK	APD

CONWAY
great people : great work

WSP | PARSONS BRINCKERHOFF

25 Mandela Way, London, SE1 5SZ
www.fmconway.co.uk www.wspgroup.com

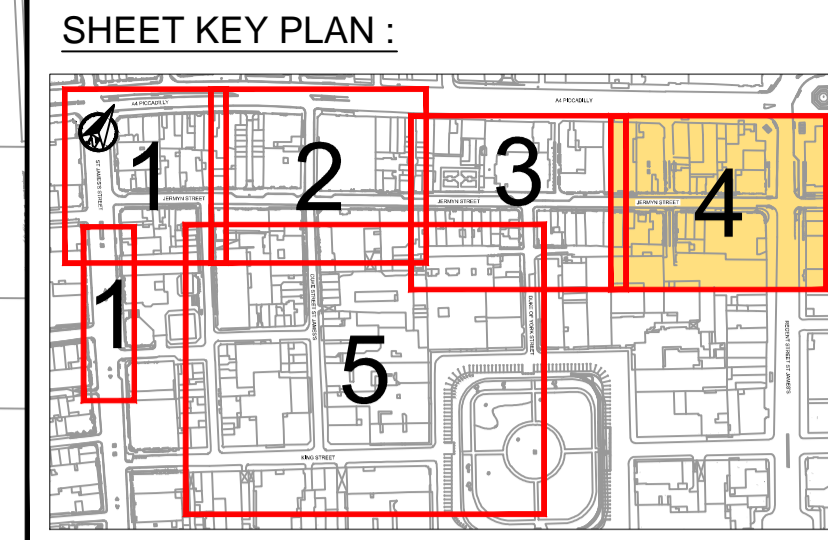
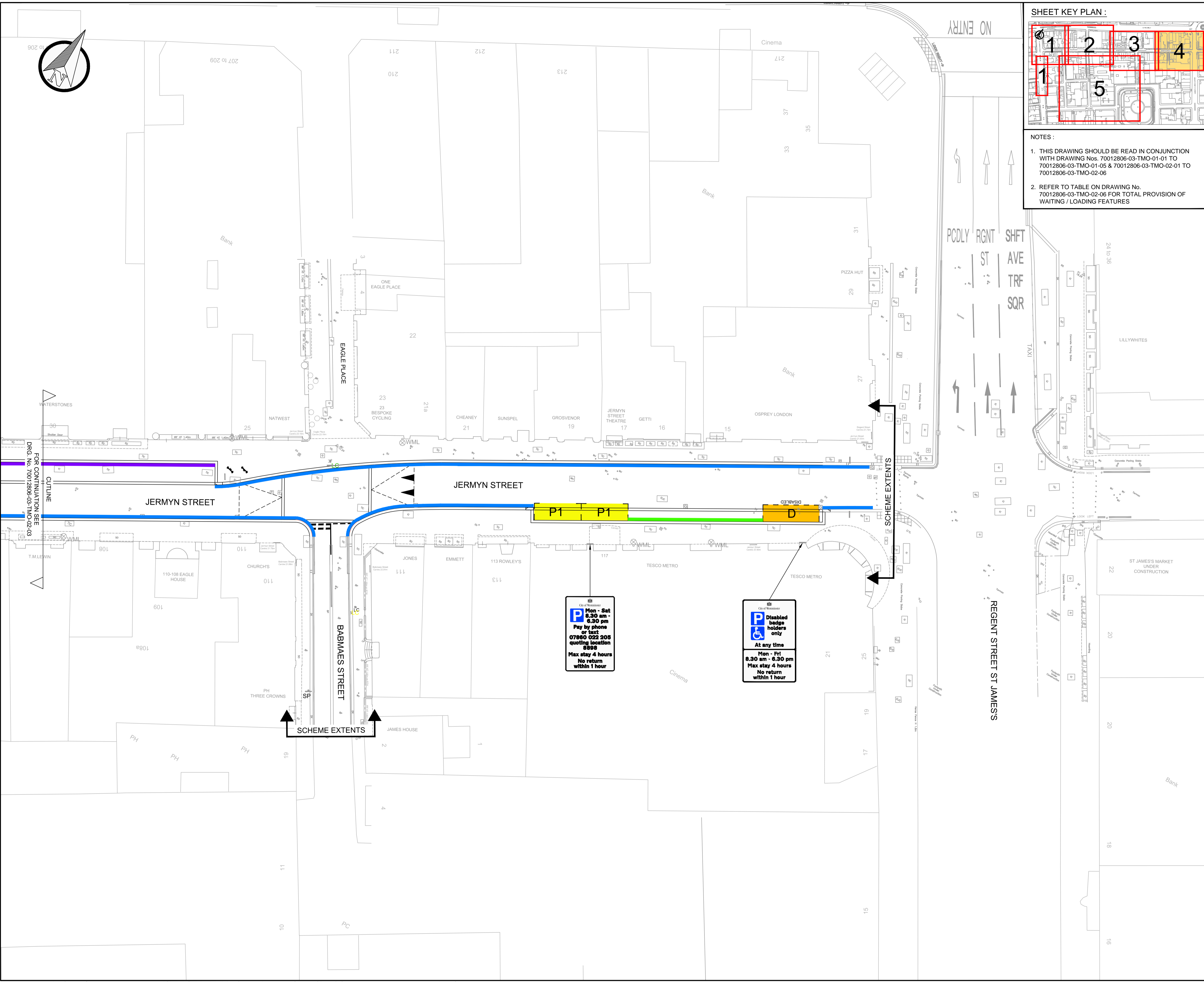
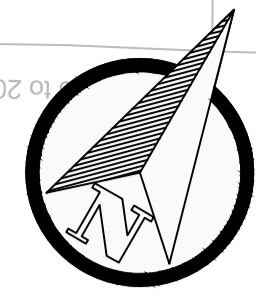
City of Westminster

PROJECT
JERMYN STREET
PUBLIC REALM IMPROVEMENTS

TITLE
TMO CONSULTATION
PROPOSED PARKING / LOADING RESTRICTIONS
SHEET 3 OF 6

SCALE @ A1	DATE	DESIGN/DRAWN	CHECKED	APPROVED	SHT
1:200	13-07-2016	PO/PAD	AK	CDS	A1
JOB No.	WWESA1481	BRIEF/DSS No.	23005		
DRAWING No.	70012806-03-TMO-PR-03	REV.			B

T:\70012806 - Jermyn Street Public Realm\3-Models and Drawings\Highways\03-Detailed Design\70012806-03-TMO-PR-01_Rev 14 Dec 2016 - 4:28pm



NOTES:

- THIS DRAWING SHOULD BE READ IN CONJUNCTION WITH DRAWING Nos. 70012806-03-TMO-01-01 TO 70012806-03-TMO-01-05 & 70012806-03-TMO-02-01 TO 70012806-03-TMO-02-06
- REFER TO TABLE ON DRAWING No. 70012806-03-TMO-02-06 FOR TOTAL PROVISION OF WAITING / LOADING FEATURES

KEY

WAITING / LOADING FEATURE TYPE AND RESTRICTION

	P1 PAY TO PARK BAY TYPE 1 : MON - SAT, 8.30am - 6.30pm, MAX STAY 4 HOURS, NO RETURN WITHIN 1 HOUR
	P2 PAY TO PARK BAY TYPE 2 : MON - SAT 8.30am - 6.30pm, MAX STAY 20 MINS, NO RETURN WITHIN 1 HOUR 6.30pm - 8.30am NO STOPPING EXCEPT TAXIS
	P3 PAY TO PARK BAY TYPE 3 : MON - SAT, MIDDAY - 6.30pm, MAX STAY 4 HOURS, NO RETURN WITHIN 1 HR NO WAITING: MON-SAT, MIDNIGHT - MIDDAY
	D DISABLED PARKING BAY AT ANY TIME, MAX STAY 4 HOURS ON MON - FRI, 8.30am - 6.30pm, NO RETURN WITHIN 1 HOUR
	R RESIDENTS PARKING BAY (WESTMINSTER E) AT ANY TIME
	T TAXI BAY AT ANY TIME NO STOPPING EXCEPT TAXIS
	DR DOCTORS PARKING BAY 8.00am - 8.00pm
	L1 LOADING BAY TYPE 1 AT ANY TIME, MAX STAY 20 MINS, NO RETURN WITHIN 1 HOUR
	L2 LOADING BAY TYPE 2 GOODS VEHICLES LOADING ONLY MON - SAT, 7.00am - 10.00pm MAX STAY 1 HOUR, NO RETURN WITHIN 1 HOUR
	SINGLE YELLOW LINE NO WAITING: MON - SAT, 8.30am - 6.30pm
	SINGLE YELLOW LINE + SINGLE YELLOW KERB MARKINGS NO WAITING : MON - SAT, 8.30am - 6.30pm, NO LOADING : MON - SAT, MIDDAY - 6.30pm
	DOUBLE YELLOW LINE NO WAITING : AT ANY TIME
	DOUBLE YELLOW LINE + SINGLE YELLOW KERB MARKINGS NO WAITING : AT ANY TIME & NO LOADING : MON - FRI, 8.30am - 6.30pm & SAT 8.30am - 1.30pm
	DOUBLE YELLOW LINE + SINGLE YELLOW KERB MARKINGS NO WAITING : AT ANY TIME, NO LOADING : MON - SAT, 7.00am - 7.00pm
	DOUBLE YELLOW LINE + DOUBLE YELLOW KERB MARKINGS NO WAITING : AT ANY TIME & NO LOADING : AT ANY TIME
	EXISTING TYPE 1 / TYPE 2 CYCLE STAND
	PROPOSED TYPE 1 CYCLE STAND
	PROPOSED TYPE 2 CYCLE STAND

B	14.12.2016	PAD	REVISED FOLLOWING COMMENTS ARISING FROM TMO TEAM & RSA		
A	16.09.2016	PAD	INITIAL ISSUE	AK	CDS
REV	DATE	BY	DESCRIPTION	CHK	APD

DRAWING STATUS: **DETAILED DESIGN**

25 Mandala Way, London, SE1 5SZ
www.fmconway.co.uk www.wspgroup.com

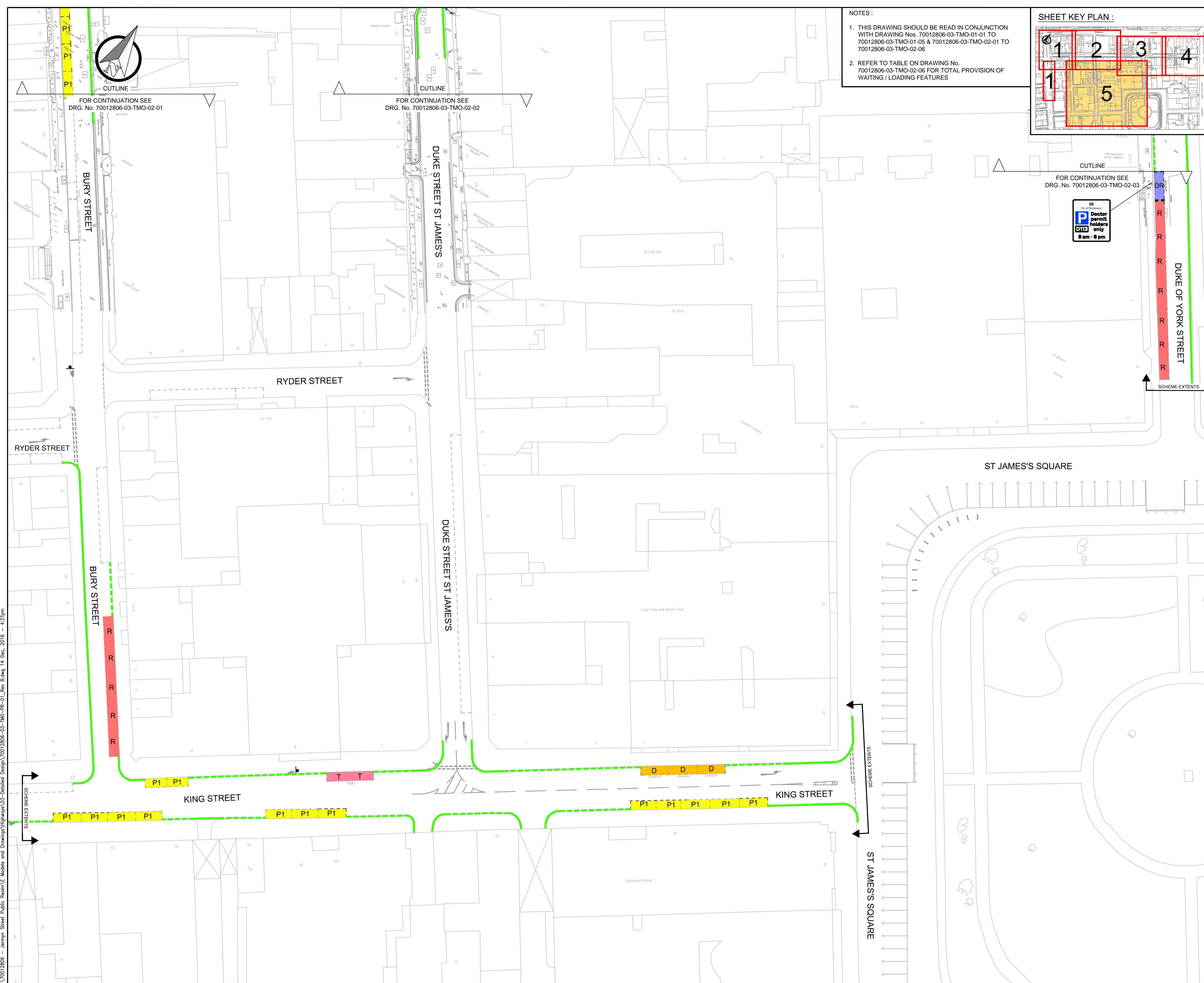
CLIENT: **City of Westminster**

PROJECT: **JERMYN STREET
PUBLIC REALM IMPROVEMENTS**

TITLE: **TMO CONSULTATION
PROPOSED PARKING / LOADING RESTRICTIONS
SHEET 4 OF 6**

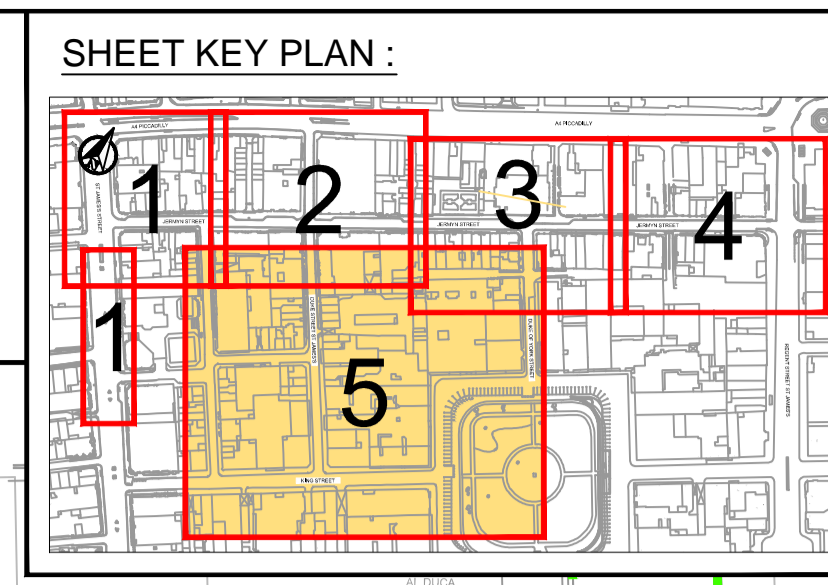
SCALE @ A1	DATE	DESIGN/DRAWN	CHECKED	APPROVED	SHT
1:200	13-07-2016	PO/PAD	AK	CDS	A1
JOB No:	WWESA1481		BREF/DSS No:	23005	
DRAWING No:	70012806-03-TMO-PR-04				REV:
					B

T:\70012806 - Jermyn Street Public Realm\3 Models and Drawings\Highways\03-Detailed Design\70012806-03-TMO-PR-01_Rev_E.dwg 14 Dec 2016 - 4:31pm



NOTES:

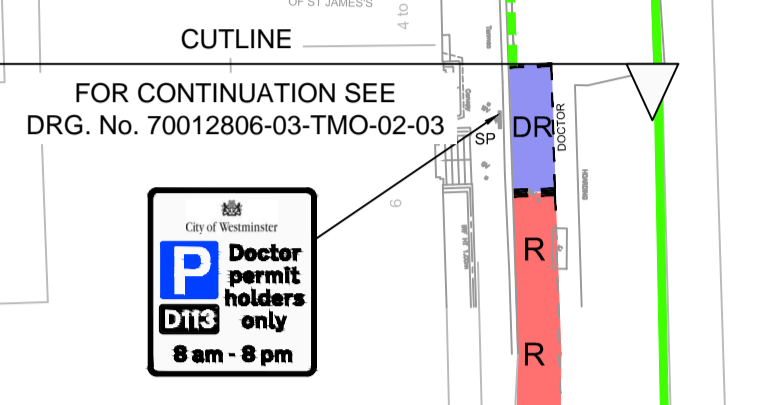
- THIS DRAWING SHOULD BE READ IN CONJUNCTION WITH DRAWING Nos. 70012806-03-TMO-01-01 TO 70012806-03-TMO-01-05 & 70012806-03-TMO-02-01 TO 70012806-03-TMO-02-06
- REFER TO TABLE ON DRAWING No. 70012806-03-TMO-02-06 FOR TOTAL PROVISION OF WAITING / LOADING FEATURES



KEY

WAITING / LOADING FEATURE TYPE AND RESTRICTION

P1	PAY TO PARK BAY TYPE 1 : MON - SAT, 8.30am - 6.30pm, MAX STAY 4 HOURS, NO RETURN WITHIN 1 HOUR
P2	PAY TO PARK BAY TYPE 2 : MON - SAT 8.30am - 6.30pm, MAX STAY 20 MINS, NO RETURN WITHIN 1 HOUR 6.30pm - 8.30am NO STOPPING EXCEPT TAXIS
P3	PAY TO PARK BAY TYPE 3 : MON - SAT, MIDDAY - 6.30pm, MAX STAY 4 HOURS, NO RETURN WITHIN 1 HR NO WAITING: MON-SAT, MIDNIGHT - MIDDAY DISABLED PARKING BAY
D	AT ANY TIME, MAX STAY 4 HOURS ON MON - FRI, 8.30am - 6.30pm, NO RETURN WITHIN 1 HOUR
R	RESIDENTS PARKING BAY (WESTMINSTER E) AT ANY TIME
T	TAXI BAY AT ANY TIME NO STOPPING EXCEPT TAXIS
DR	DOCTORS PARKING BAY 8.00am - 8.00pm
L1	LOADING BAY TYPE 1 AT ANY TIME, MAX STAY 20 MINS, NO RETURN WITHIN 1 HOUR
L2	LOADING BAY TYPE 2 GOODS VEHICLES LOADING ONLY MON - SAT, 7.00am - 10.00pm MAX STAY 1 HOUR, NO RETURN WITHIN 1 HOUR
	SINGLE YELLOW LINE NO WAITING: MON - SAT, 8.30am - 6.30pm
	SINGLE YELLOW LINE + SINGLE YELLOW KERB MARKINGS NO WAITING: MON - SAT, 8.30am - 6.30pm, NO LOADING: MON - SAT, MIDDAY - 6.30pm
	DOUBLE YELLOW LINE NO WAITING: AT ANY TIME
	DOUBLE YELLOW LINE + SINGLE YELLOW KERB MARKINGS NO WAITING: AT ANY TIME & NO LOADING: MON - FRI, 8.30am - 6.30pm & SAT 8.30am - 1.30pm
	DOUBLE YELLOW LINE + SINGLE YELLOW KERB MARKINGS NO WAITING: AT ANY TIME, NO LOADING: MON - SAT, 7.00am - 7.00pm
	DOUBLE YELLOW LINE + DOUBLE YELLOW KERB MARKINGS NO WAITING: AT ANY TIME & NO LOADING: AT ANY TIME
	EXISTING TYPE 1 / TYPE 2 CYCLE STAND
	PROPOSED TYPE 1 CYCLE STAND
	PROPOSED TYPE 2 CYCLE STAND



T:\70012806 - Jermyn Street Public Realm E Models and Drawings\Highways\03-Detailed Design\70012806-03-TMO-PR-01_Rev 14 Dec 2016 - 4:37pm

B	14.12.2016	PAD	REVISED FOLLOWING COMMENTS ARISING FROM TMO TEAM & RSA		
A	16.09.2016	PAD	INITIAL ISSUE	AK	CDS
REV	DATE	BY	DESCRIPTION	CHK	APD

DRAWING STATUS: **DETAILED DESIGN**

25 Mandala Way, London, SE1 1SZ
www.imconway.co.uk www.wspgroup.com

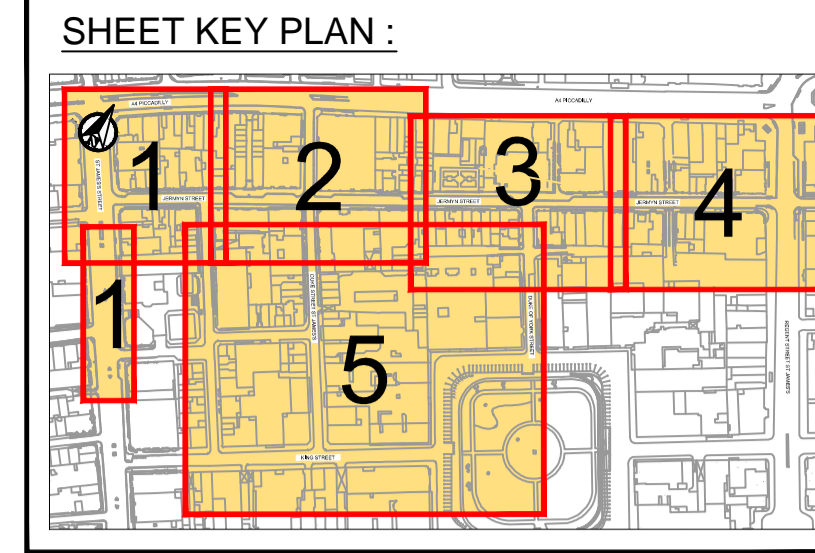
CLIENT:

PROJECT: **JERMYN STREET PUBLIC REALM IMPROVEMENTS**

TITLE: **TMO CONSULTATION PROPOSED PARKING / LOADING RESTRICTIONS SHEET 5 OF 6**

SCALE @ A1	DATE	DESIGN/DRAWN	CHECKED	APPROVED	SHT
1:333	13-07-2016	PO/PAD	AK	CDS	A1
JOB No.	BREF/DSS No.		REV.		
WWESA1481	23005		B		
DRAWING No.	70012806-03-TMO-PR-05				B

JERMYN STREET, St. JAMES'S STREET, DUKE STREET St. JAMES'S, DUKE OF YORK STREET & KING STREET
TMO WORKS - SCHEME WIDE GAINS AND LOSSES TABLE



- NOTES :
- THIS DRAWING SHOULD BE READ IN CONJUNCTION WITH DRAWING Nos. 70012806-03-TMO-01-01 TO 70012806-03-TMO-01-05 (EXISTING WAITING & LOADING PROVISIONS) & DRAWING Nos. 70012806-03-TMO-02-01 TO 70012806-03-TMO-02-05 (PROPOSED WAITING AND LOADING PROVISIONS)

RESTRICTION / PROVISION TYPE	SCHEME-WIDE OVERALL GAINS / LOSSES		
	Existing	Proposed	Difference
PAY TO PARK BAYS PAY BY PHONE BAY TYPE 1: MON - SAT, 8.30am - 6.30pm MAX STAY 4 HOURS, NO RETURN WITHIN 1 HOUR	168.1m (32 BAYS)	137.3m (26 BAYS)	-30.9m (-6 BAYS)
PAY TO PARK BAYS PAY BY PHONE BAY TYPE 2: MON - SAT, 8.30am - 6.30pm MAX STAY 20 MINS, NO RETURN WITHIN 1 HOUR 6.30pm - 8.30am NO STOPPING EXCEPT TAXIS	5.8m (1 BAY)	6.1m (1 BAY)	0.2m (NO CHANGE)
PAY TO PARK BAYS PAY BY PHONE BAY TYPE 3: MON - SAT, MIDDAY - 6.30pm MAX STAY 4 HOURS, NO RETURN WITHIN 1 HOUR	0.0m	46.7m (8 BAYS)	46.7m (8 BAYS)
DISABLED PARKING BAYS AT ANY TIME MAX STAY 4 HOURS ON MON - FRI, 8.30am - 6.30pm, NO RETURN WITHIN 1 HOUR	40.7m (7 BAYS)	40.7m (7 BAYS)	0.0m (NO CHANGE)
RESIDENTS PARKING BAYS (WESTMINSTER E) AT ANY TIME	85.4m (16 SPACES)	79.6m (15 SPACES)	-5.8m (-1 SPACE)
TAXI BAYS AT ANY TIME, NO STOPPING EXCEPT TAXIS	44.0m (8 BAYS)	44.0m (8 BAYS)	0.0m (NO CHANGE)
DOCTOR'S PARKING BAYS 8.00am - 8.00pm	5.8m (1 BAY)	5.8m (1 BAY)	0.0m (NO CHANGE)
LOADING BAY TYPE 1 MAX STAY 20 MINS, NO RETURN WITHIN 1 HOUR	14.9m	14.9m	0.0m
LOADING BAY TYPE 2 GOODS VEHICLES LOADING ONLY. MON - SAT, 7.00am - 10.00pm MAX STAY 1 HOUR, NO RETURN WITHIN 1 HOUR	14.0m	0.0m	-14.0m
SINGLE YELLOW LINE NO WAITING: MON - SAT, 8.30am - 6.30pm	315.9m	254.1m	-61.9m
SINGLE YELLOW LINE WITH SINGLE YELLOW KERB MARKINGS NO WAITING: MON - SAT, 8.30am - 6.30pm NO LOADING: MON - SAT, MIDDAY - 6.30pm	0.0m	54.5m	54.5m
DOUBLE YELLOW LINE NO WAITING: AT ANY TIME	510.0m	398.9m	-111.1m
DOUBLE YELLOW LINE WITH SINGLE YELLOW KERB MARKING NO WAITING: AT ANY TIME NO LOADING: MON - FRI, 8.30am - 6.30pm, & SAT 8.30am - 1.30pm	44.5m	7.5m	-36.9m
DOUBLE YELLOW LINE WITH SINGLE YELLOW KERB MARKING NO WAITING: AT ANY TIME NO LOADING: MON - SAT, 7.00am - 7.00pm	55.6m	55.6m	0.0m
DOUBLE YELLOW LINE WITH DOUBLE YELLOW KERB MARKING NO WAITING: AT ANY TIME NO LOADING: AT ANY TIME	622.8m	798.7m	175.8m
CYCLE STANDS	16 No.	18 No.	2 No.

B	14.12.2016	PAD	REVISED FOLLOWING COMMENTS ARISING FROM TMO TEAM & RSA		
A	16.09.2016	PAD	INITIAL ISSUE	AK	CDS
REV	DATE	BY	DESCRIPTION	CHK	APD

DRAWING STATUS: DETAILED DESIGN



CLIENT: City of Westminster

PROJECT: JERMYN STREET
PUBLIC REALM IMPROVEMENTS

TITLE: TMO CONSULTATION
TMO WORKS SCHEME WIDE GAINS / LOSSES
SHEET 6 OF 6

SCALE @ A1	DATE	DESIGN/DRAWN	CHECKED	APPROVED	SHT
1:333	13-07-2016	PO/PAD	AK	CDS	A1
JOB No.	BRIEF/DSS No.				
WWESA1481	23005				
DRAWING No.	REV.				
70012806-03-TMO-PR-06	B				

T:\70012806 - Jermyrn Street Public Realm\5 Models and Drawings\Highways\03-Detailed Design\70012806-03-TMO-PR-01_Rev_E.dwg 14 Dec 2016 - 4:37pm